



friendship force

SAN FRANCISCO BAY AREA
Changing the Way You See the World

Vol. 28 No. 5

SAN FRANCISCO BAY AREA NEWSLETTER

November/December 2011

PRESIDENT'S MESSAGE

In the summer of 2009, Barry Rader asked me to consider taking on the position of president of our Friendship Force of the San Francisco Bay Area club. I had served as secretary for two years and knew that it was a big responsibility, and at first I was a little reluctant to say yes. Karen McCready had been an outstanding president the previous two years, and I was not sure I could come close to matching her organizational skills and enthusiasm.

Fortunately I found myself surrounded by a team of excellent board members, many of whom were veterans with our club and who lent a tremendous amount of expertise to furthering the club's aims. And so I am particularly appreciative of all the work that they have done the past two years with all the exchanges, the meetings, the finances, and the programs. My thanks to all of you who have served with me on the board.

At our Annual Meeting on October 1, we elected our Executive Committee for next year. Don Pelland was elected as President. Don has been our Exchange Banker for a number of years, brings a great deal of experience to the office, and will do an outstanding job. Martha LeRoy is our new Vice-President. This past summer Martha organized the Indonesian exchange, which was one of the highlights of the year. Ann Halligan is our new Secretary and Nancy Menz is our Treasurer. Both women have been active in the club the past couple of years and will bring fresh ideas for our programs in 2012.

Our current membership shows 104 individuals on our roster. In terms of numbers we continue to be fairly strong. A lot of that strength comes from outreach from individual members in our club and from publicity that was successful in bringing in new members. Our first two meetings, with the excellent speakers we had and this summer's Indonesian Exchange, attracted new people who eventually became members.

To further our outreach program, the board met on Saturday, October 29 and voted for a restructuring of the Area Groups. (This restructuring is described in the next column on this page.) With these new changes we hope to create opportunities for all of our members to meet more often and to better educate our new members about our activities.

In addition to the election at the Annual Meeting, our club members voted for the outbound exchange for 2013. The board reviewed the members' selections and voted to submit the following to FFI. In the number one spot was Wales, followed by Sweden, and then Argentina. Also the board is requesting FFI to approve two inbound exchanges for 2013—one from Biarritz,

President's Column continued on Page 2

EXCITEMENT APLENTY! CAPE OF GOOD HOPE IS COMING TO TOWN!

Great plans are unfolding rapidly, so we are lining up members interested in home or day hosting when the Cape of Good Hope Club from Cape Town, South Africa arrives in town. We are also looking for enthusiastic members to serve on committees and provide stimulating ideas for this next inbound exchange. Cape of Good Hope hosted our club royally in 2009. You don't want to miss out on reciprocating and participating in sharing our glorious Bay Area with these feisty, fun-loving, fascinating South Africans!

Date of the Exchange: June 18–25, 2012

Next planning meeting: January 4, 2012 at 10:30 a.m. at Wil and Louise Heiduk's home, 1422 Thunderbird Ave., Sunnyvale. It's important that everyone interested in hosting in any way and/or participating in the planning, please attend this meeting. Even if you can't come because of work or other commitments, yet want to participate, let us know that, too! Please RSVP to either of the co-Exchange Directors:

Karen McCready

Luree Miller

MORE FFSFBA ACTIVITIES PLANNED FOR 2012

The three Area Groups in FFSFBA over the last several years have been eliminated. The FFSFBA Board of Directors at its October meeting replaced the Area Groups Coordinator and the Area Groups with an "Event Development Group." This group will plan up to ten events—general meetings, cultural programs, informational sessions or social gatherings—with the entire membership invited. These events should provide greater variety and interest with better attendance than previous activities.

The change was the recommendation of a Study Group which met three times. Members of the group were Louise Heiduk, Karen McCready, Luree Miller, Don and Mary Pelland, Darlene Boyanich, June Cademartori and Martha LeRoy. Their goal was to involve more members, especially new members. They wanted to revitalize exchange meetings and social activities in order to bring new life to the club. They recommended having an event every month and at least ten a year so that our members can become better acquainted. The goal is to have individual planners for each event who would

More Activities continued on Page 2

President's Column, continued from Page 1

France, which we visited this year in May, and one from Manitoba, Canada, which our club visited in 2008. There is a good chance that these inbound exchanges will be approved.

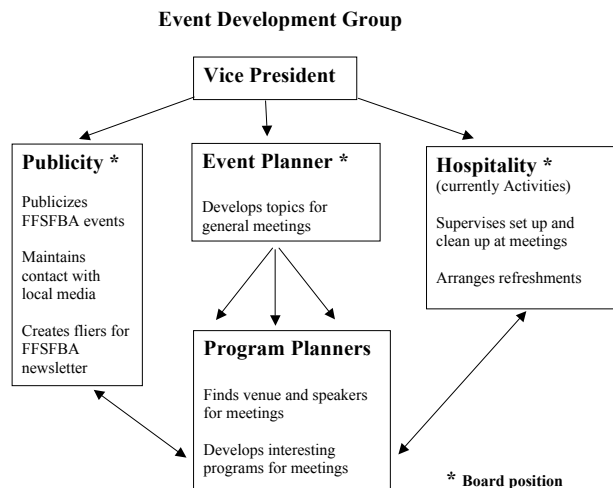
I look forward to seeing all of you at the Holiday Luncheon on Saturday, December 10 at Michaels at Shoreline Restaurant in Mountain View. Information on that event was recently mailed to you. Following the luncheon, we will have a presentation of the Biarritz trip by the members who traveled there last May. The luncheon is a great time to renew old acquaintances, and I encourage everyone to attend.

Once again my thanks to everyone in the club for helping me out the past two years. I believe our club has a unique travel program that makes a significant contribution to world understanding. I am sure that our energy and commitment will continue into the future.
—Steve Smallwood

More Activities, continued from Page 1

come from different areas, and activities that would be held in different areas all over the SF Bay Area.

At this time, the position of Event Planner will be held by Vice President Martha LeRoy. The Publicity post will be staffed by Karen McCready. The Hospitality position has yet to be filled. Below is a flow chart showing the positions involved and their duties.



The following is the text of the Study Group's report to the Board:

Basic Rationale:

We are trying to revitalize the current membership and continue to attract new members. For the sake of continuity and for involvement of a majority of the members in activities, we need to offer more frequent events and to recruit more members for planning and executing these events. New members should receive an early orientation on the purposes and procedures of our exchanges; general meeting programs can address these topics in ways that involve the whole membership. For example, we can create programs that give new members an inside look at the experiences of an exchange week, both as a host and as a guest. At these same events, we can recruit members to help during the exchange and/or to travel with us. The current Activities position, so vital to setting up a meeting, will be incorporated into this group with a Hospitality position.

Event Development Organization:

1. The Event Planner shall assemble and chair a committee to list important topics to be covered in general meetings, e. g., hosting, going on outbound exchanges, being an ED, learning about the culture of an inbound. Programs relevant to an exchange shall be addressed at general meetings soon after an exchange is confirmed, setting an Exchange Committee in motion as soon as possible. In addition, the Event Planner may suggest social and fun activities for some events.

2. The Event Planner shall appoint a Program Planner for each of these events. The Program Planner shall arrange for a venue, find speakers if appropriate, and arrange activities with audience appeal and involvement.

3. The Hospitality person shall maintain equipment and materials for all events, arrange for refreshments, if needed, and shall supervise set up and clean up of each venue.

4. The Publicity Director and Exchange Directors shall support the needs of this committee.
—Don Pelland

THE STATE OF FRIENDSHIP FOREST

Have you ever visited Friendship Forest in Prusch Park? This lovely concept came about in 1995, when our club decided to dedicate a tree to each of the foreign clubs visiting us. The City of San Jose gave the club an undeveloped portion of Emma Prusch Farm Park, at the back corner off Story Road. Veteran members Don Dillon, Howard Craven, and Mary Alice van Doorn put tremendous effort into getting the Forest established. By 2006, our club had planted 19 trees to honor our guests. I became involved about 2008, coordinating with the Prusch Park staff, ordering the trees, and supervising their planting.

From the outset, the Foresters installed plaques to identify each of the trees and its honoree. Vandalism and weather took their toll. Several of those installed within the past two years were stolen. We seem to have run out of ways to preserve the plaques.

In spite of vandalism and the demise of several trees, the Friendship Forest program is worth continuing. To make this possible, I've been working toward some practical solutions:

1. Tree identification: Because of vandalism and weather damage, give up on installing plaques. My solution is to create an aerial map with the trees numbered on it. I've done that much so far and will make a numbered list with the tree's name, the date dedicated, and the honored club. Then we need to figure out a way to post numbers next to the trees—perhaps a short post with the numbers woodburned into it and then painted. We might be able to get the City of San Jose's workshop to make them for us.

2. Tree planting: We now have established an ongoing relationship with Our City Forest (OCF), a nonprofit in San Jose that supplies street trees and park trees for the city. Whereas we had been spending as much as \$100 per tree, OCF is happy with a \$25 donation for each tree. Their interns take complete charge of preparing the site and planting the tree. Because fall is the best time to plant to get roots established, we delayed until fall for the last couple of exchanges. For South Africa, I decided to ask for the planting in advance, so that tree was planted last week in anticipation of their June 2012 visit. At the same time, we planted a tree for Malang, Indonesia, the club that visited us in July. I propose to continue the practice of planting in the fall for any future confirmed exchange.



Aerial map of the Friendship Forest in Prusch Park

3. Tree choices: Consulting with OCF's knowledgeable staff, I choose drought tolerant trees that bear some relationship, at least symbolic, to the honored club. For example, because Costa Rican and Indonesian trees might not thrive in San Jose, we planted California native Coffeeberry trees for both of them. The Indonesians we hosted are from the island of Java. Get it?

4. Irrigation: An underground watering system was installed in our Forest several years ago, but it services only a limited number of sites. Consequently, the personnel advising us about where to plant new trees miscalculated for some of them. Thus, we lost some of the trees. To sustain two trees planted in the summer of 2009, I purchased tree watering bags that deliver 15 gallons of water over a period of several hours. Taija Aguirre answered an appeal for volunteers that I posted with the Santa Clara Boy Scouts Council and, equipped with a device to turn on the water source, has been filling the water bags once a week. I purchased and installed the bags and bought another set of watering devices and hoses so that Karen Rice can share the watering with Taija. They will water those two trees during the six or so dry months of the year—at least until we can be sure that the trees are well enough established to survive on rainfall. The two trees planted last week will need weekly watering for a few more weeks.

5. Mulch: For the last several years, our club has ordered clean wood chip mulch from a waste management site in Mil-

pitans and paid a driver \$150 to deliver a load in the fall. This was our largest annual expenditure for the Forest. The main purposes of the mulch are, of course, to keep down the weeds and preserve moisture. Recently, the park began receiving large amounts of recycled yard waste that the tree pruning companies are required to donate. This is not ideal material, containing as much dirt as wood, but it seems to be doing the job pretty well. The park staff has always had to spray to keep the weeds down anyway, which they do on an intermittent basis.

6. Status of the trees: Of the 24 trees planted since the Forest's inception in 1995, 17 remain, including the two we planted this month. Knowing the limitations of the watering system and how to supplement it, in addition to planting drought tolerant trees at the optimum time, I think we can continue planting these tribute trees with confidence.

7. The limited scope of the Forest: As a look at the aerial map will show, our designated area probably won't support more than about 8 more trees. Most of these will be planted in the middle of the two rows on the right side of the path. Perhaps we might plant one or two across the path from the silk tree. A space formerly occupied by an avocado tree is available between #14 and #16.

8. Helping our members to discover Friendship Forest: Tucked over in that back corner of the Park, the Forest is easy



This structure is next to the entrance of the Friendship Forest area of Prusch Park. (<http://www.sjpark.org/regional/emmaprusch.asp>)

to overlook. Perhaps we need to organize an event, such as attending one of Prusch Park's annual festivals, that will enable them to appreciate what it contributes to the Park and how it represents Friendship Force's purpose.

I'm indebted to Karen Rice and Taija Aguirre for keeping the new trees going and to Gary Sandoval, head gardener at Prusch Park for doing everything he can to help us. Alex Pearson, Prusch Park Director, has given us valuable advice and moral support, also.

I hope that I have shed more light on what the Friendship Forest is and how we can keep it going. Be sure to visit the Forest and check out the display board that describes our club's purposes.
—Karen L. McCready

HOWARD CRAVEN

On October 7 Howard Craven passed away at his home in San Jose, at age 90. Howard was instrumental in starting our Friendship Forest and was a member of our club for many years. Howard and daughter Kathryn participated in our club exchange to Tashkent, Uzbekistan, and Bishkek, Kyrgyzstan.

Howard was born in 1921 in Eureka, Utah and raised in Rexburg, Idaho. He served as Sr. VP and Chief Economist for Bank of America, the 12th District Federal Reserve Bank, and Union Bank.

He is succeeded by Lucile Hess Craven, his wife of 68 years, and three children: Michael Craven, David Craven, and Kathryn Craven-Sarr.

A private memorial service was held on October 9th. Donations may be made to the Peninsula Open Space Trust in Howard's memory.

Condolences can be sent to Howard's wife, Lucile:
Lucile Craven, 18688 Rosalind, San Jose, CA 95120

PIZZA AND JAZZ IN FREMONT

On September 20, several East Bay members gathered at Bronco Billy's Pizza in the Irvington District of Fremont to enjoy two youth bands directed by a couple of retired Fremont teachers. These budding musicians played their hearts out on several Dixieland standards while we shared hearty portions of pizza. We enjoyed tapping our toes to the music, maybe even singing along a bit, and getting to know each other better.
—Karen McCready

AREA GROUPS

As the time of area groups comes to an end, I'm sure that all of us have fond memories of gatherings and activities that have been planned for us by all of our area leaders. I'd like to thank the following people for their energy and ingenuity in the work that they put into these projects: June Cademartori, Elizabeth Shumway, Joy Hillman, Dee Gustavson, Natalie Heling, Karen McCready, Janis Maurry, Luree Miller, Gail Boyd, and Jan Gordon. Thanks to all of you for a job well done.

—Louise Heiduk, Area Group Coordinator

TEXAS AND CALIFORNIA— A GREAT COMBINATION!

The October 1–7 exchange with the Dallas club was a rootin', tootin' time. Twenty ambassadors from Dallas, Fort Worth, Richardson, Irving, McKinney, Plano, and Arlington were hosted by 15 FFSFBA members—Pat Macholl, Ann Halligan, Don and Mary Pelland, Barry Rader and Karen McCready, Herb and Kumi Clough, Gail Boyd, Gayle Howell, Martha LeRoy, Wil and Louise Heiduk, and Scott and Luree Miller. In addition to a more traditional (albeit rainy) tour of Muir Woods and a ferry ride on the Bay as well as some free time to set their own course, the ambassadors enjoyed some very non-traditional Bay Area experiences—a tour of the famous Mission District murals, a train ride in a privately owned coach through Niles Canyon, some Charlie Chaplin and popcorn munching at Essanay Silent Film Museum, a biker bar barbecue at the Florence, and a lesson in Silicon chip manufacturing at Intel Museum. Day hosts Dean and Bernice Batchelder, Wendy Dewell, RoseMarie Everett, Marty Fraga, Jan Gordon, Joy Hillman, Karen Rice, Kevin and Sara Rossano, Edith Sommer, and Peggy Wester were on hand to help with much of the festivities. If you missed partnering with this great group of new friends from Texas, you missed something special. So, seriously consider another opportunity to meet new friends by participating in our next incoming exchange... South Africa in June 2012.
—Luree Miller & Gail Boyd, co-ED's

**NEW MEMBERS:
THE STEPHEN AND TAIJA AGUIRRE FAMILY**

Taija Aguirre is a native of Helsinki, Finland. She immigrated to the United States 25 years ago, and moved to the Bay Area in 1998. She recently became a Citizen of her adopted country. Taija enjoys long bike rides and long hikes with their furry four-legged member Aalto, a sagacious four and a half year old Wirehair Fox Terrier. Taija is an amateur re-enactor with her husband Stephen. She is also a Court Appointed Child Advocate, and a Friends of Scouting, Finance Chair. Since moving to the Bay Area, she has worked at Intel, Nokia, and at Stanford University. Taija holds a Human Resources Management certificate from the University of California, Santa Cruz. She holds an AA degree in Business Administration from West Valley College, and studied Computer Science at the University of the District of Columbia.

Stephen Aguirre is a native of Holdenville, Oklahoma. He is an amateur Civil War historian, re-enactor and lecturer. He is an avid reader on Civil War histories. Professionally he is a high technology strategic planner and was previously a licensed architect. Additionally Stephen is the Choir director in the Christian Re-enactors Church, and an attendee at the Holy Redeemer Lutheran Church, San Jose. Stephen holds a Bachelor of Science in Civil Engineering from University of



Southern California, Master of Architecture from the University of California, Berkeley, and Master of Electrical Engineering work from San Jose State University.

Both Stephen, Taija and Aalto enjoy the outdoors, seeing new places, meeting new people, believe in preservation of open spaces harmoniously, living with our planet, and connecting world communities together.



Dallas members at the Farewell Party



The Dallas group in Muir Woods



Our new Texas friends

FRIENDSHIP FORCE WORD-SPEAK

A Guide to Weaving Your Way Through
the Language of Friendship Force

Ambassador: a participant in an exchange to promote cultural understanding and awareness who is expected to represent the home club or country as a citizen ambassador.

Host: the individual(s) providing a home visitation experience to the visiting ambassadors. Hosts may be full hosts, day hosts, or dinner hosts. Hosts may arrange for friends, neighbors or other community members to meet the visiting ambassador(s) and be involved in parts of the exchange.

Exchange: the primary purpose of FF—a formal program of people-to-people cultural exchanges usually of 5-7 days between two countries or parts of the same country, organized by volunteers to introduce the guests to the culture and people of a city, region, or country. Different types of exchanges exist and include: Inbound to our club; Outbound from our club to another FF club; Domestic within the USA; Special Missions of friendship; Development Exchanges; Global; and Bridge Builders. Selected exchanges open to all USA members are promoted on the website: <http://thefriendshipforce.org>

Bridge Builder Exchange: a special exchange matching similar special interests between two FF clubs, e.g., gardeners, golfers, artists, school bands, etc.

Buddy: a partnering of newer with experienced members to communicate and share organization information.

Club Directory: a special photo membership directory listing contact information and interests of all members of our club.

Conference: a meeting of FF clubs to share ideas and best practices—regional meetings usually held every other year and rotated among clubs, international meetings usually held each spring with alternate years in Atlanta or abroad.

Committees: where the work and business of our club gets conducted with oversight by the four elected and various appointed board members and committee chairs.

Day Host: a FF member or prospective member in the host club who assists the host with transportation to organized program events, provides day tours of local attractions, or offers to serve as a host if the host is at work or unavailable during daytime.

Development Exchange: a special exchange organized to an area of the world where FF is attempting to establish a new club—may or may not include home stays.

Dinner Host: an interested community member who wishes to be involved with an exchange and may host a small dinner, luncheon or brunch for visiting ambassadors and their hosts.

Domestic Exchange: an exchange usually of 4-5 days established to introduce members of FF to another area within the USA—also referred to as an Interclub Visitation.

Exchange Committee: the expanded group of volunteers who assist the exchange director in the planning and execution of an exchange.

Exchange Director: (ED)—the lead volunteer and face for any exchange. Responsible for organizing and selecting ambassadors to make a positive impact on international understanding and goodwill; for planning the exchange and preparing ambassador or host participants for their roles in the cultural event; and for acting as the leader of the journey into the heart of another country or area. Appointed by the president and confirmed by the board, in our club.

Exchange Program: a set of activities organized by the hosting FF club to introduce inbound participants to the culture and life of the area or country being visited. Participants are expected to honor their hosts by attending events, while a few activities may be identified as optional.

Exchange Signup: the first step toward possible involvement (no commitment) for members to express interest to ED to stay informed for participation in upcoming exchanges, as ambassadors or as hosts.

Exchange Survey: a straw poll taken each fall to identify areas of the world that our members would like to visit on exchange or to host—used by Atlanta to provide matching exchange assignments between or among world clubs.

Exchange Workshop: a cultural sensitivity and logistics briefing required for all ambassadors before embarking as a participant on each exchange.

FF—FFSFBA—FFI: Friendship Force of the San Francisco Bay Area (FFSFBA) is one of 300+ clubs around the world, chartered by the non-profit Atlanta-based Friendship Force International (FFI) to offer intercultural home hosting experiences as part of the Friendship Force (FF).

FFSFBA Board: 4 elected officers plus committee chairs who oversee the business of our club. Board meetings are open to all members.

Global Exchange: a cultural exchange with a special makeup of ½ ambassadors from the outbound country and ½ from other parts of the world to explore the culture of the host country.

Home Stay: hosting arrangements provided by a household in a distant location, identified, organized, and vetted by the FF club sponsoring an exchange.

Inbound Exchange: a formal 6-7 day program of hosting activities arranged by our club as the hosts for another group of FF members from some other country or some other part of the USA.

Interclub Visitation: See domestic exchange.

National Exchange: exchanges organized by FFI staff, open to any FF member in the USA and led by experienced local exchange directors.

Outbound Exchange: a visit of cultural understanding arranged by distant FF members to enable participants vetted and organized by our club to learn about the distant country or area through a 6-7 day program of daily activities and family experiences.

Region: a geographic area, established by Friendship Force International for administration and communication purposes. Represents a portion of a country, the entire country, or a grouping of several countries. California is part of the Western Region.

Regional Representative: each region in the USA has a designated representative who is a member of a club within the region and serves on an ad hoc advisory board to Friendship Force International to encourage communication to and from the region and Atlanta. Our current representative is Barry Rader, of Fremont.

Special Mission Exchanges: organized to a country usually in economic or political upheaval and needing humanitarian acts of special friendship such as medical supplies, food, or the special skills of participants. May or may not include home stays.

Trail Blazer: an honorary designation given to clubs that have met a level of sustained exchange activity and high involvement of members and who organize and lead a global exchange.

Adapted from a booklet compiled by the Northern Colorado club in 2009.

2011 FFSFBA COMMITTEES EXECUTIVE COMMITTEE

President@ffsfba.org: Stephen Smallwood
VP@ffsfba.org: Darlene Boyanich
Secretary@ffsfba.org: Dee Gustavson
Treasurer@ffsfba.org: Scott Miller

STANDING COMMITTEES

Activities@ffsfba.org: Lois Smallwood
Membership@ffsfba.org: Mary Pelland
Newsletter@ffsfba.org: Dave & Dee Gustavson
Parliamentarian@ffsfba.org: Karen McCready
Publicity@ffsfba.org: Arnold Becker

EXCHANGE DIRECTORS

Biarritz, France, OutboundBF@ffsfba.org
Barry Rader & Karen McCready
Malang, Indonesia, InboundMI@ffsfba.org
Martha LeRoy
Dallas, Texas, OutboundDT@ffsfba.org

Luree Miller

SUPPORT COMMITTEES

ExchangeBanker@ffsfba.org: Don Pelland
Merchandise@ffsfba.org: Barry Rader
Forester@ffsfba.org: Don Dillon
Karen Rice
Forest records: Mary Alice vanDoorn
Program@ffsfba.org: Darlene Boyanich
Area Group Coordinator, Regional@ffsfba.org:
Louise Heiduk
Sunshine@ffsfba.org: Darlene Boyanich
Webmaster@ffsfba.org: Dan Eggerding

FFSFBA website: <http://ffsfba.org>

Friendship Force International
233 Peachtree Street, Suite 2250
Atlanta, Georgia 30303

Tel: 1-404-522-9490, 1-800-554-6715 Fax: 1-404-688-6148
Website: <http://thefriendshipforce.org>

2011 CALENDAR

December 10 Holiday Luncheon, 12 noon,
at Michael's Shoreline
Restaurant, Mountain View

2012 CALENDAR

January 8 Travelog on Iceland by Dave
and Dee Gustavson, Los
Altos Library, early evening.
Optional no-host dinner
afterward in a restaurant in
Los Altos.

February 11 World Friendship Day, in
the afternoon at the First
United Methodist Church,
2950 Washington Blvd.,
Fremont

**February 15–
March 6** Outbound Exchange to New
Zealand (New Plymouth
and Wellington)

June 18–25 Incoming Exchange from
Cape Town, South Africa

**October 30–
November 3** FFI Conference, Hiroshima,
Japan

SAN FRANCISCO BAY AREA
friendship force



THE FRIENDSHIP FORCE
Changing the Way You See the World
The Friendship Force of the San Francisco Bay Area
35408 Terra Cotta Circle, Fremont, CA 94536
Phone (510) 794-6844, Fax by pre-arrangement
<http://www.ffffba.org/info@ffffba.org>